

DATASHEET

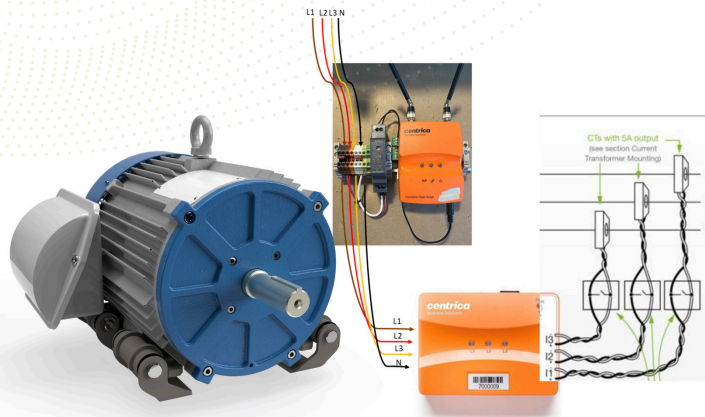
# Turntide Smart Motor System™ Measurement and Verification (M&V)

Showcase Turntide-Generated Energy Savings Data with Ease

Many M&V solutions exist today, but the right solution can give you a leg up proving out savings from Turntide motors. For your project, you want an M&V solution that helps you communicate savings to your customers in a way that's accurate, easy to digest, and readily available.

## Introducing Turntide M&V

Provided by Emergent Metering



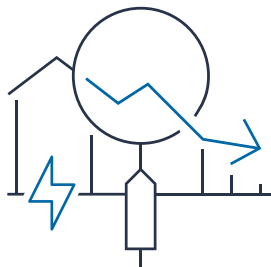
Through rigorous research, testing, and evaluation, we've sourced the best M&V solution for Turntide systems, which comes from industry expert Emergent Metering.

Emergent Metering's Turntide M&V solution streamlines energy data and reporting, helping you accelerate customer deals from initial pilot install to large-scale deployment.

### Benefits



**Reliable and  
Accurate M&V Data**



**More Flexible and  
Cost-Effective  
Installation**



**Comprehensive  
Energy Reporting**

## Features

- **Energy readings account for power factor correction**, enabling higher reliability and accuracy of M&V readings
- **Wireless connection between the router and meter** allows for greater flexibility and reduced costs during install
- **Connects via cellular network through 3 major networks (AT&T, T-Mobile, Verizon)**, which increases network reliability and minimizes downtime\*
- **Router is able to support multi-unit motor deployments** on larger commercial or industrial buildings such as warehouses
- **Energy dashboard is automatically set-up** after devices are set up in the system
- **Easily view, analyze, and export energy data across all sites through the included dashboard**, which includes a rich library of available metrics to display, such as overlay weather data
- **Includes the ability to generate custom reports** to compare energy usage before and after Turntide HVAC retrofit
- **1-Year standard warranty** on all devices through Emergent Metering

\*Also connects via Wi-Fi and LAN

## M&V Solution Components



### Centrica PAN-42

Metering Unit to measure power, voltage, current, power factor



### Centrica Bridge

4G LTE router to enable connectivity to the cloud and a wireless connection to metering systems



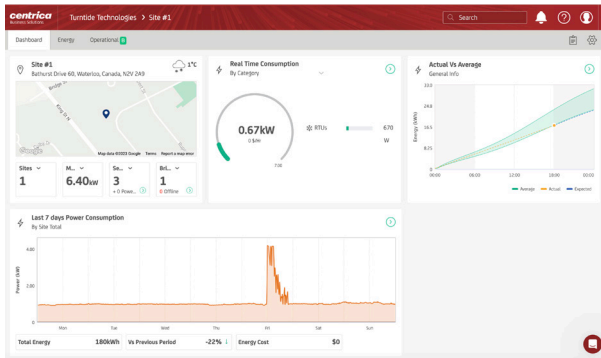
### Current Transformers (CTs)

CTs are used to generate safe and accurate electrical current measurements

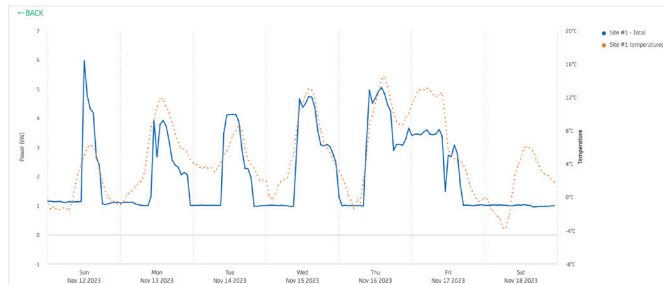
## PowerRadar Web Dashboard

Through the PowerRadar Web Dashboard, you can view, analyze, and share a wide range of energy performance data to stakeholders, including your customers. Includes the ability to generate custom reports detailing pre- and post-Turntide retrofit energy usage.

### Dashboard Capabilities: Examples



View site and energy information at a glance



Overlay temperature data for system performance analysis

## Ordering and Shipping Information

Emergent Metering has made it easy for Turntide VARs to purchase all necessary M&V components in one simple package, available for purchase online [here](#). Purchases can also be made through PO. Equipment is readily available in stock, shipping from the United States.

Through Emergent Metering, you can also order individual components a la carte as needed through their [website](#).

## Product Support

Support and install collateral is available through Emergent Metering's [product support page](#).

## Additional Notes about Turntide M&V

Turntide is now 100% focused on generating the best energy savings outcomes for our customers. Therefore, we've discontinued our previous in-house solutions related to M&V and motor connectivity so our product development teams can fully focus on what generates the most value for our partners and customers: energy cost reduction.



**Turntide RMK**

Turntide previously supported M&V through RMK-002 and RMK-003 (which were part of Turntide's Remote Monitoring Kit product family). With more Turntide motors installed in the field, we've come to realize other solutions from industry leaders simply provide better and more reliable performance than the RMK.

To generate the best M&V results and outcomes, Emergent Metering's Turntide M&V solution is now Turntide's recommended M&V solution. We encourage all Turntide partners to transition over as soon as possible without impacting customer relationships. Turntide plans to discontinue support for RMK installs outside of special extenuating circumstances. For any questions, please contact your Turntide Channel Account Manager.

### Other M&V Solutions

There are alternative M&V solutions that can perform M&V for Turntide projects. We've rigorously evaluated many solutions and have determined that Emergent Metering's Centrica PAN-42 solution will offer the best M&V results.

If you're sure that you'd like to use another solution, please contact our team ([hvacmotorsales@turntide.com](mailto:hvacmotorsales@turntide.com)) to ensure optimal M&V results on your project.

## Need More Information?

For more questions about the Turntide M&V solution provided by Emergent Metering, please contact the Emergent Metering team at [sales@emergentmetering.com](mailto:sales@emergentmetering.com).

### TURNTIDE TECHNOLOGIES

Our breakthrough technologies accelerate electrification and sustainable operations for energy-intensive industries

Turntide Technologies | 1295 Forgewood Avenue, Sunnyvale, CA 94089  
[turntide.com](http://turntide.com) | [hvacmotorsales@turntide.com](mailto:hvacmotorsales@turntide.com)